

NAL | Ecobox

Aim:

To be a catalyst to integrate sustainability into architecture and planning.

Target groups:

- architects and planners
- consultants, developers
- municipalities, regional- and national authorities



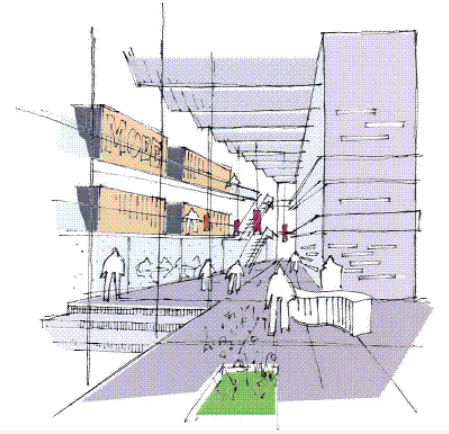
A **wiki** is a piece of server software that allows users to freely create and edit Web page content using any Web browser.

Wiki supports hyperlinks and has a simple text syntax for creating new pages and crosslinks between internal pages on the fly.

Wikis are often used to create collaborative websites, to power community websites and in knowledge managementsystems.

Source: <http://wiki.org/wiki.cgi?WhatIsWiki>

www.ecoarchwiki.net



Categories:

Buildings

Location

Typology:

Residential

Office

Education

Sports

Culture

Health

Commercial

Technology:

Passive Design Measures

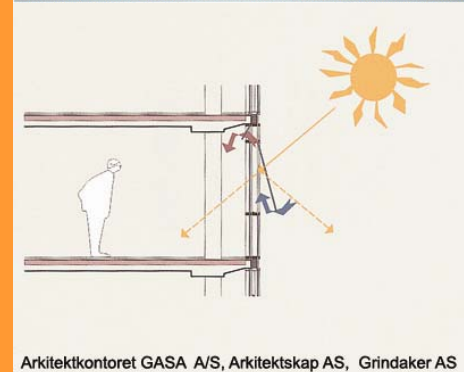
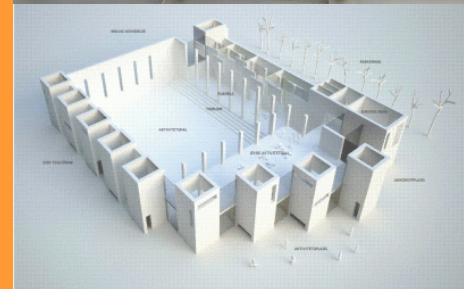
Energy Efficiency Measures

Energy Generation

Process

Sustainability

www.ecoarchwiki.net



Arkitektkontoret GASA A/S, Arkitektkap AS, Grindaker AS





On this page...

1. [Introduction](#)
2. [Building description](#)
3. [Technology](#)
 - 3.1 [Passive Design Measures](#)
 - 3.2 [Energy Efficiency Measures](#)
4. [Evaluation](#)
 - 4.1 [Energy performance](#)
 - 4.2 [Monitoring](#)
 - 4.3 [User acceptance](#)
 - 4.4 [Financial information](#)
5. [Public Comments](#)
 - 5.1 [Voting](#)
 - 5.2 [Comments](#)



Key Information

Owner	AVAX S.A.
Country	Greece
City	Athens
Street	16 Koniari Str.
Occupant(s) of Building	AVAX S.A. headquarters
Primary Use	Office
Typical days/hours of use	10 hours per day
Designers	MELETITIKI - A.N. Tombazis and Associates Engineers
Energy Consultant	University of Athens, Department of Applied Physics, Prof. M. Santamouris
Energy sources	Electricity
Year of completion	January 1998
Number of floors above ground	5
Number of floors below ground	3

1. Introduction

The AVAX S.A. is an office building constructed in the framework of the EU programme Joule-Thermie and is situated at the centre of Athens.

2. Building description

This narrow, east facing office building uses adjustable external vertical shading devices to reduce solar gain in the morning, allowing the building to operate without active cooling for

1. Public Comments

Please feel free to cast a vote or enter a comment.

1.1 Voting

If you live or work in the building please rate the overall thermal,visual and acoustic environment.

- very good
- good
- satisfactory
- poor
- very poor

[Vote](#)

very good	(0/0%)
good	(0/0%)
satisfactory	(1/100%)
poor	(0/0%)
very poor	(0/0%)

1.2 Comments

[\(Please click here to add a comment\)](#)